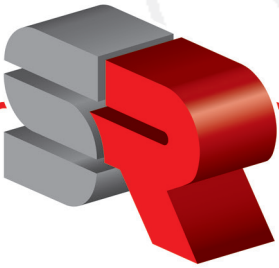


# Wet scrubber

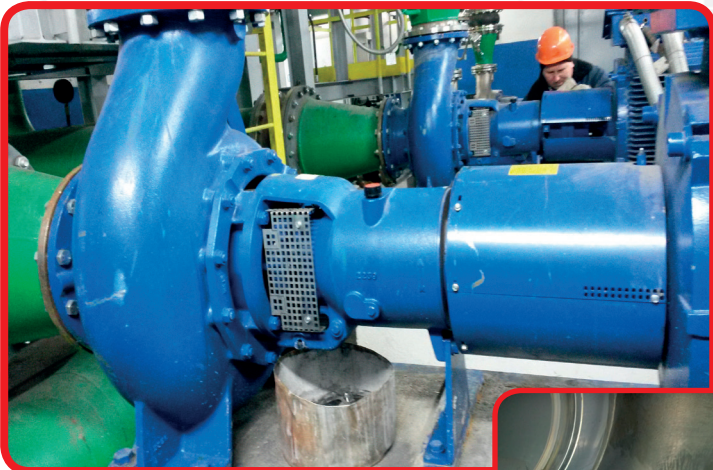


**SALVATORE  
ROBUSCHI  
POMPE PARMA**

## RB - Ecology and Environment

### Air pollution control

A wet scrubber operates by introducing the dirty gas stream with a scrubbing liquid – usually water. Particulate or gases are collected in the scrubbing liquid. Wet scrubbers are generally the most appropriate air pollution control device for collecting both particulate and gas in a single system.



### Application: Wet scrubber

PUMP: RBB 200-35AR 4C75 4D11 B000 1  
PERFORMANCE: Flow 1000m<sup>3</sup>/h – head 26 m  
LIQUID: water with ash

Pumps are used for water circulation in wet scrubbing system of a blast furnace. The pump is able to guarantee, thanks to the use of the channel impellers, high efficiencies even with dirty liquids

### RB SERIES

Impeller type: **channel**.  
Discharge sizes: **from DN 65 to DN 300**.  
Maximum working pressure: **10 bar**  
Flow rate: **up to 2400 m<sup>3</sup> /hr**.  
Differential head: **up to 70 m**.  
Impeller with special blades geometry for low NPSH and high free passage.

